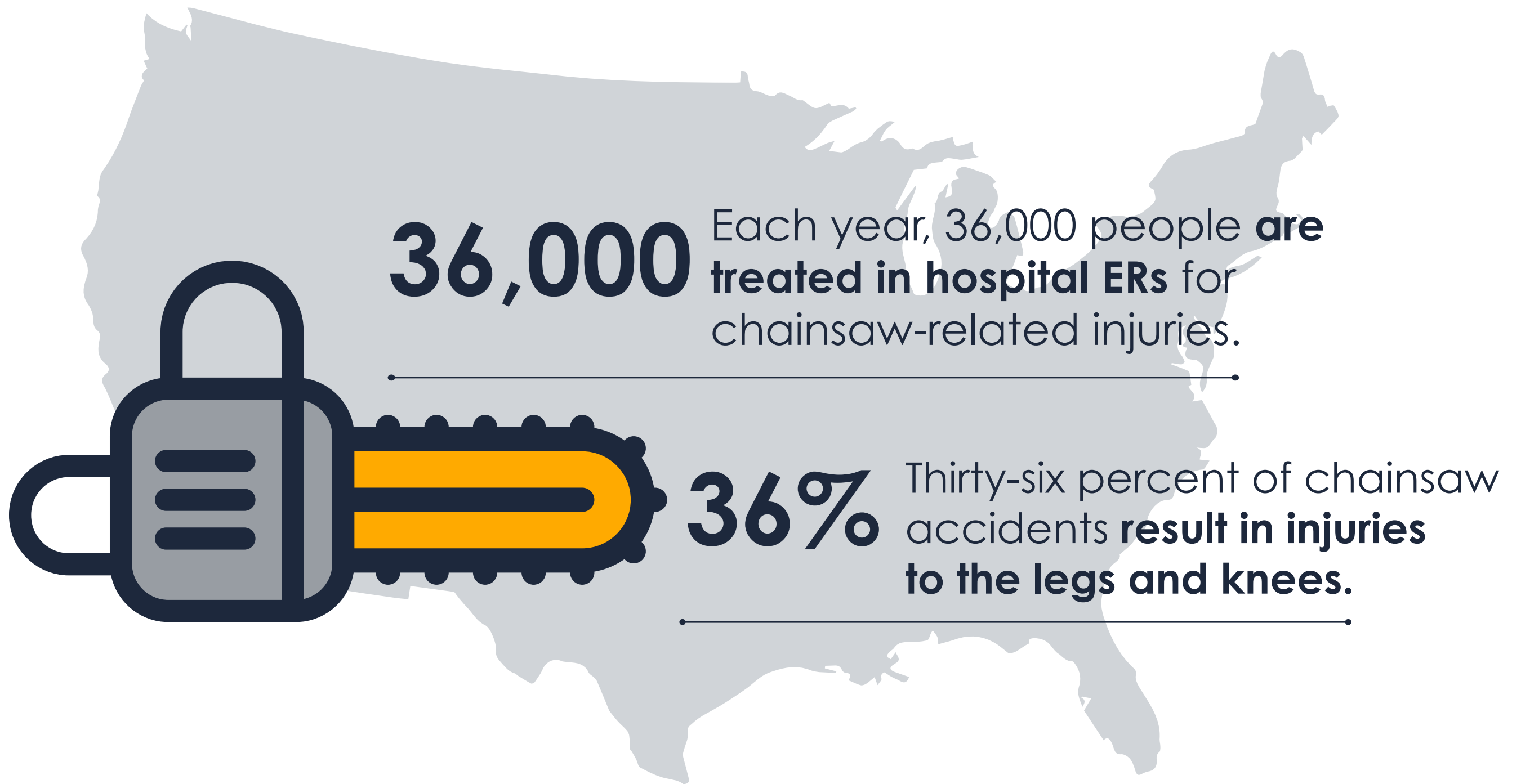


Chainsaw Safety

- STATISTICS -



The average chainsaw injury requires **110 stitches**.



The two most common places for injuries are the **front left thigh** and the **back of the left hand**.



One in five chainsaw injuries is from **kickback**.



Kickback is the single greatest cause of injury to **chainsaw users**.



Medical costs for chainsaw injuries amount to around **350 million dollars** per year.



Kickback, binding, and pull-in cause the most injuries from chainsaws.

Source: Centers for Disease Control and Prevention

- INJURIES -

Source: U.S. Product Safety Commission



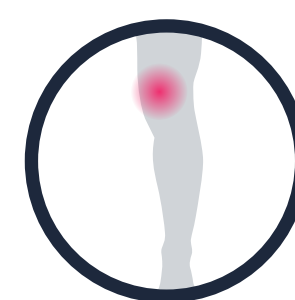
Head Injuries
3,418



Upper Body Area
2,141



Arm and Hand Area
17,994



Leg Area
16,348



Foot Area
2,885